



Pukaskwa
National Park

Park Management Plan

Progress Report 2020-21

Management plans identify the long-term strategic direction and vision for Parks Canada places. Plans provide a framework for site management, aligning with the Agency's mandate, vision and strategic outcomes. Management plans are guiding documents for decision making and planning.

This annual update serves as a progress report to partners, stakeholders, and the public outlining our work in implementing the key strategies from the management plan over the last year.

Key Strategy 1: AN ENDURING RELATIONSHIP: Honouring the Anishinaabek and Métis, and their connection to the land known as Pukaskwa

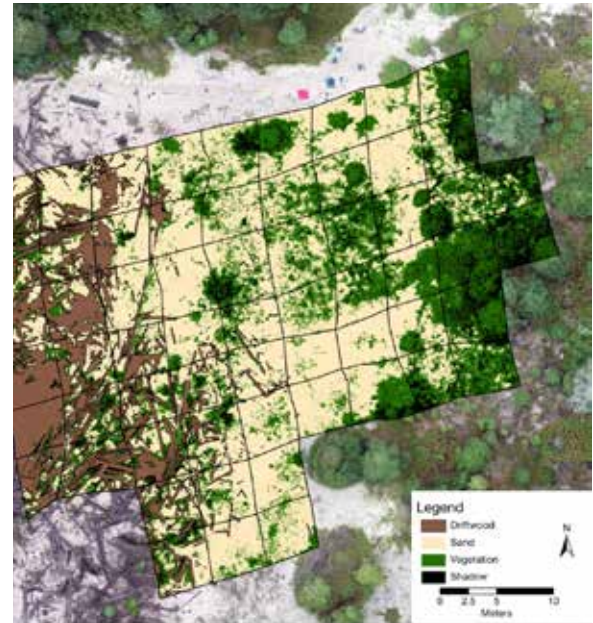
- Continued fostering a close relationship with Biigtigong Nishnaabeg throughout the year by participating in quarterly meetings with an Operational Working Group.
- Worked with Biigtigong Mno-zhi-yaawgamig (Pic River First Nation Health Centre) to present a multi-day cultural skills workshop, including sessions on tufting and quill work.
- Increased the amount of employment opportunities available for Indigenous youth through the federal governments YESS program (Youth Employment and Skills Strategy).
- Continued to try new approaches for enhancing recruitment of local First Nation applicants to job postings by hosting virtual information sessions for job advertisements.
- Collaborated on a project proposal with Biigtigong and Netmizaaggamig Nishnaabeg to enhance land based knowledge and conservation initiatives that involve fire dependent ecosystems.





Key Strategy 2: A WILDERNESS SUSTAINED: Experiencing Pukaskwa's wilderness through strengthened ecosystems

- Continued collecting baseline data and assessing indicators as part of the Ecological Integrity program to monitor ecosystem health in Pukaskwa.
- Used innovative new technology to strengthen knowledge of ecosystem change for species at risk by monitoring Pitcher's thistle habitat change using drones and digital image analysis.
- Collected information on five species of bats that regularly use the park throughout the summer, including one species – Little Brown Bat (*Myotis lucifugus*) – that is an at risk species.
- Recognized internationally for leadership in wildfire suppression following deployment of Pukaskwa fire crew to Oregon, USA.
- Participated in the development of the 2020-2024 Lakewide Action Management Plan (LAMP) for Lake Superior, in collaboration with several partners around the lake.



Key Strategy 3: A "SUPERIOR" CONNECTION: Making Pukaskwa more relevant to Canadians

- Allowed a gradual reopening that ensured staff and visitor safety during the COVID-19 pandemic, resuming most services by July 15.
- Welcomed a record number of visitors within a reduced season, with visitation 76.8% higher in 2020 than 2010 (the baseline year).
- Experienced 89% occupancy at oTENTik sites, demonstrating this novel camping opportunity continues to interest and motivate visitors to come to the park.
- Continued collaborating with Biitigong Nishnaabeg on drafting a shared protocol for the care, collection and handling of archaeological objects found in Pukaskwa National Park.





Area Management Strategy: HATTIE COVE

- Made several structural enhancements to both the Kiosk and the Visitor Centre to extend the longevity of these facilities and improve the quality of services for visitors.
- Installed 6 electric vehicle charging stations to support the Government of Canada's goal toward a low-carbon future.
- Completed ~12% of deferred work to improve the overall condition of built assets, including replacement of eavestroughs at the comfort stations and building fences to protect above ground utilities.
- Delivered streamlined programs in Hattie Cove with a focus on visitor safety, and sharing natural or cultural heritage in smaller groups, accommodating physical distances and public health guidelines.

Area Management Strategy: LAKE SUPERIOR COAST

- Uncovered no invasive species in trial of two experimental protocols for the early detection of rusty crayfish and zebra mussel and and frontcountry surveys for exotic invasive species.
- Continued to monitor & assess white-tailed deer observations from wildlife cameras and other incidental records, noting stable numbers since 1971 and a decline in the past 10 years.
- Completed planning for enhancements to Pukaskwa's marine base to be implemented in 2021, in support of park operations along the Lake Superior coast.
- Recorded the highest number of sites occupied in backcountry camping since current record-keeping format was established in 2014, showing that Pukaskwa's Lake Superior coast resonates in the hearts and minds of Canadians.



For more information on the park management plan and to read past progress reports, please visit: www.pc.gc.ca/en/pn-np/on/pukaskwa/info/index